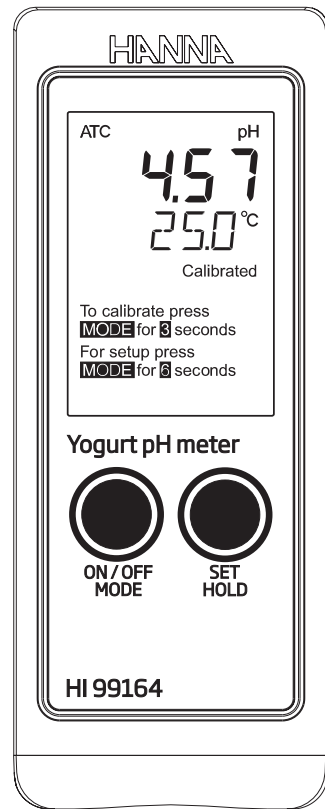
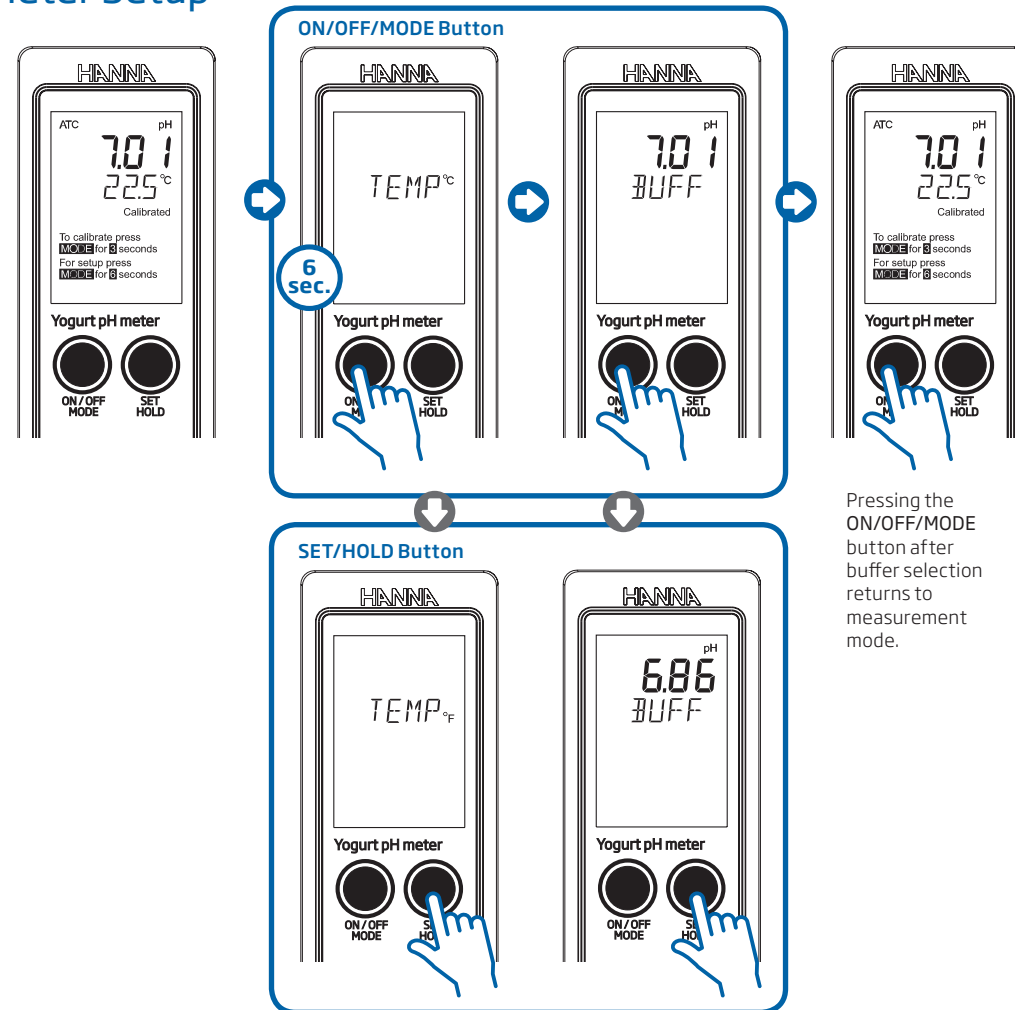


Visual Quick Start Guide

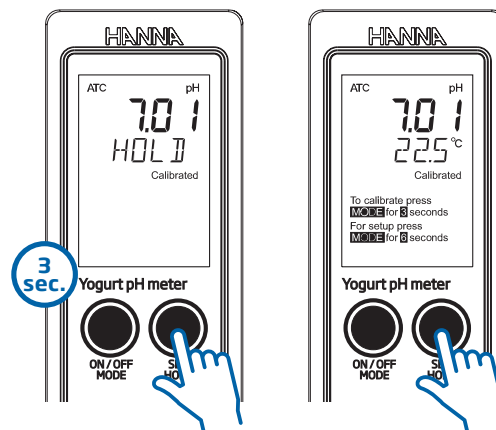
HI99164



Meter Setup



Freeze Display

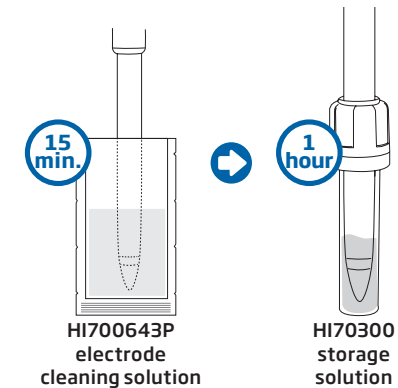


Press any button to return to measurement mode.

Care and Maintenance

Electrode Cleaning

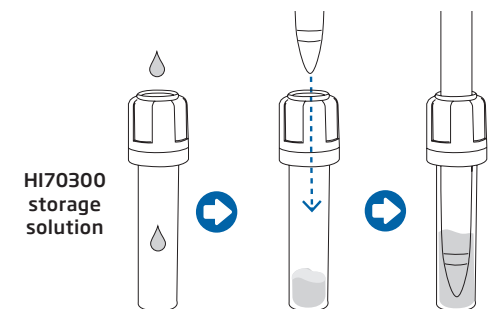
- Soak the electrode in HI700643P electrode cleaning solution for approximately 15 minutes to dissolve deposits and other coatings. After cleaning, place in storage solution for 1 hour before use.



Electrode Storage

- After use, rinse the electrode with water and replace the protective cap filled with a few drops of HI70300 storage solution.

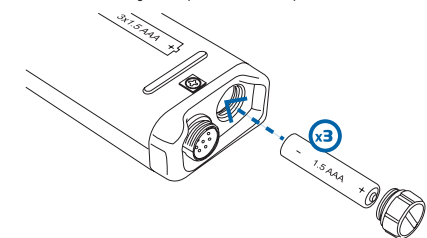
DO NOT USE DISTILLED OR DEIONIZED WATER FOR STORAGE PURPOSES.



Battery Replacement

To replace the batteries:

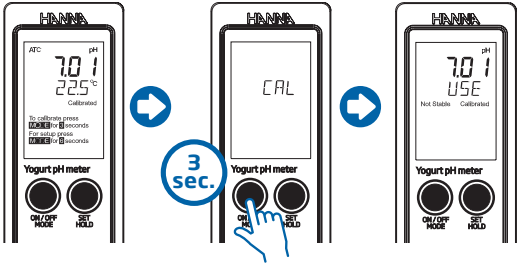
- Open the battery compartment cap (on the bottom of the instrument).
- Remove old batteries.
- Replace new batteries, observing the polarity.
- Close the battery compartment cap.



Hanna Instruments reserves the right to modify the design, construction, or appearance of its products without advance notice.



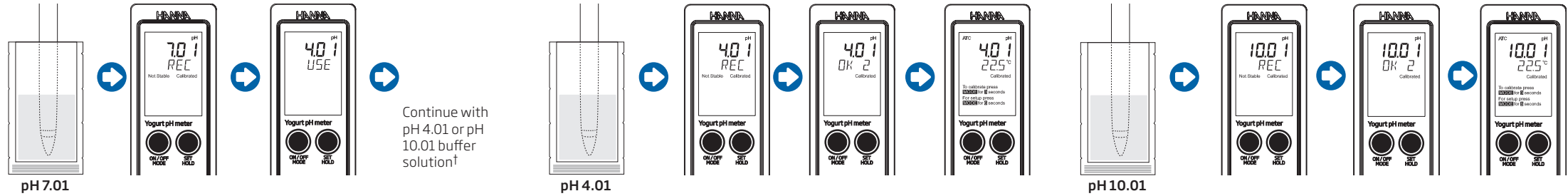
pH Calibration†



- A** For two-point calibration using pH 7 buffer go to procedure A
- B** For one-point calibration using pH 4, pH 7, or pH 10 buffer go to procedure B

† The probe tip should be rinsed with purified water (reverse osmosis, distilled, or deionized) before and after placing in any solution (buffer, storage or sample).

A Two-Point Calibration using pH 7 Buffer



B One-Point Calibration using pH 4, pH 7, or pH 10 Buffer

